

SHAANXI SHINHOM ENTERPRISE CO., LTD

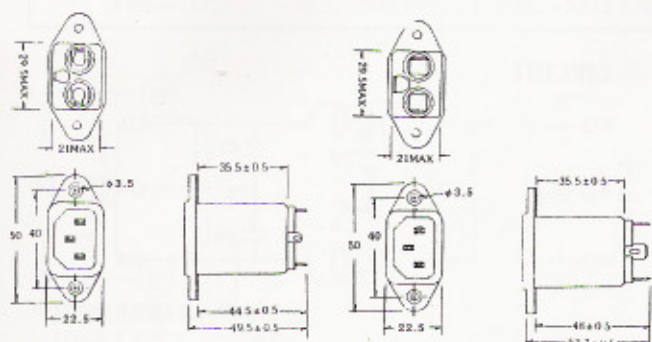


EMI FILTER





DIMENSION(mm)

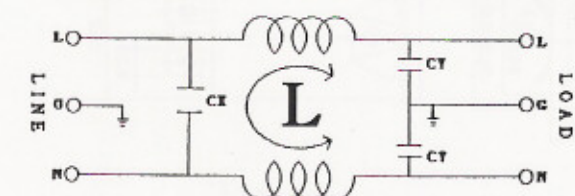


RT TYPE

T TYPE

ITEM	MODEL
RATED VOLTAGE	250V AC
RATED CURRENT	1A.3A.6A.10A
LEAK CURRENT	0.8mA MAX 250V,60HZ
LINE TO LINE	1400V DC
LINE TO GROUND	2200V DC
INSULATION RESISTANCE	100MΩ MIN 250VDC
DIRECT CURRENT RESISTANCE	0.5Ω MAX
OPERATING TEMPERATURE	-25°C~+85°C

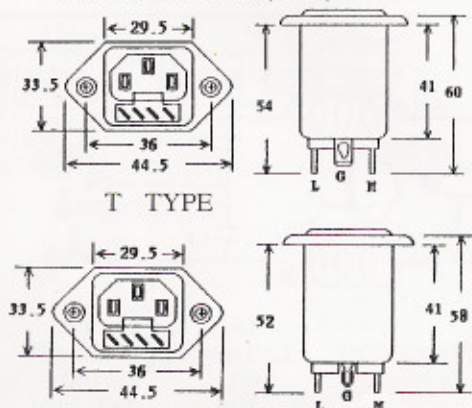
CIRCUIT



CX:0.1uF	CY:2x3300pF	L: 1A	2×3.7mH
		3A	2×1.8mH
		6A	2×0.7mH
		10A	2×0.3mH



DIMENSION(mm)

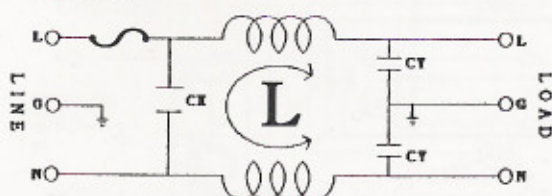


T TYPE

RT TYPE

ITEM	MODEL
RATED VOLTAGE	250V AC
RATED CURRENT	1A.3A.6A.10A
LEAK CURRENT	0.8mA MAX 250V,60HZ
LINE TO LINE	1400V DC
LINE TO GROUND	2200V DC
INSULATION RESISTANCE	100MΩ MIN 250VDC
DIRECT CURRENT RESISTANCE	0.5Ω MAX
OPERATING TEMPERATURE	-25°C~+85°C

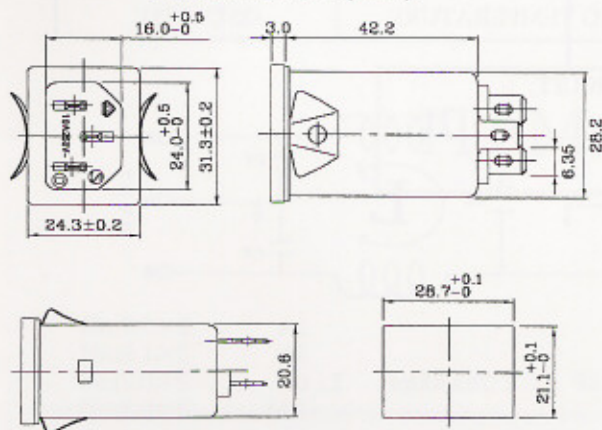
CIRCUIT



CX:0.1uF	CY:2x3300pF	L: 1A	2×3.7mH
		3A	2×1.8mH
		6A	2×0.7mH
		10A	2×0.3mH

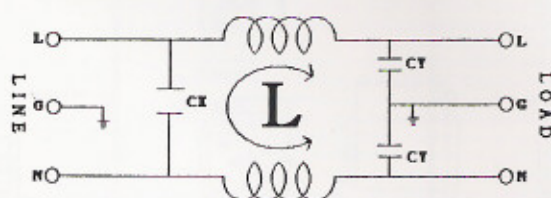


DIMENSION(mm)



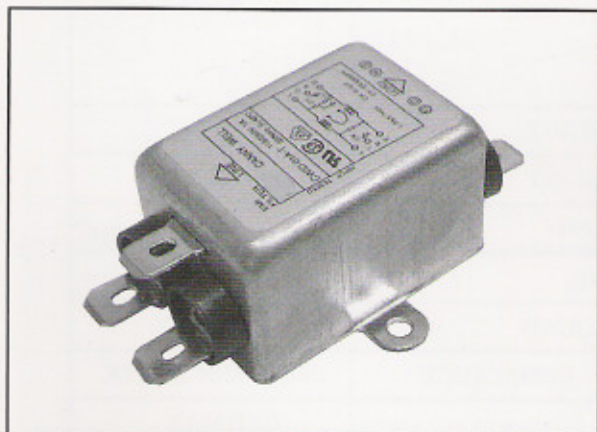
ITEM	MODEL
RATED VOLTAGE	250V AC
RATED CURRENT	1A.3A.6A.10A
LEAK CURRENT	0.8mA MAX 250V,60HZ
LINE TO LINE	1400V DC
LINE TO GROUND	2200V DC
INSULATION RESISTANCE	100MΩMIN 250VDC
DIRECT CURRENT RESISTANCE	0.5ΩMAX
OPERATING TEMPERATURE	-25°C~+85°C

CIRCUIT

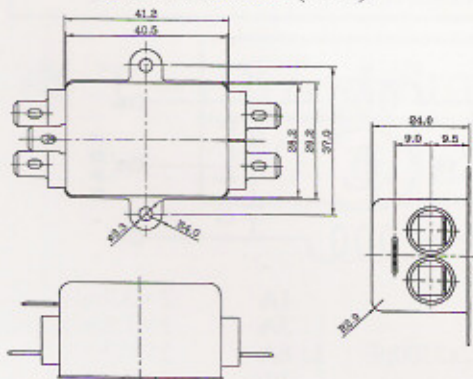


1A	2×3.7mH
3A	2×1.8mH
6A	2×0.7mH
10A	2×0.3mH

CX:0.1uF    CY:2x3300pF    L:

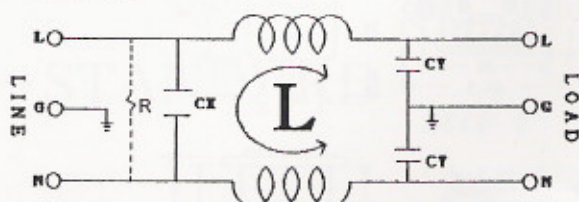


DIMENSION(mm)



ITEM	MODEL
RATED VOLTAGE	250V AC
RATED CURRENT	1A.3A.6A.10A
LEAK CURRENT	0.8mA MAX 250V,60HZ
LINE TO LINE	1400V DC
LINE TO GROUND	2200V DC
INSULATION RESISTANCE	100MΩMIN 250VDC
DIRECT CURRENT RESISTANCE	0.5ΩMAX
OPERATING TEMPERATURE	-25°C~+85°C

CIRCUIT

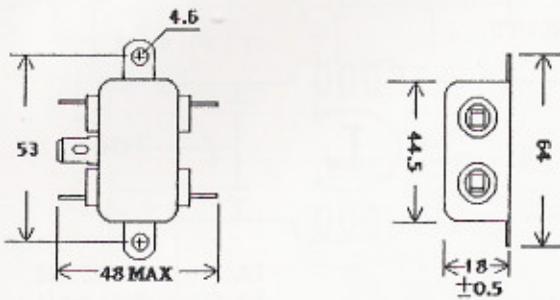


1A	2×5mH
3A	2×2.5mH
6A	2×1mH
10A	2×0.4mH

CX:0.1uF    CY:2x3300pF    L:

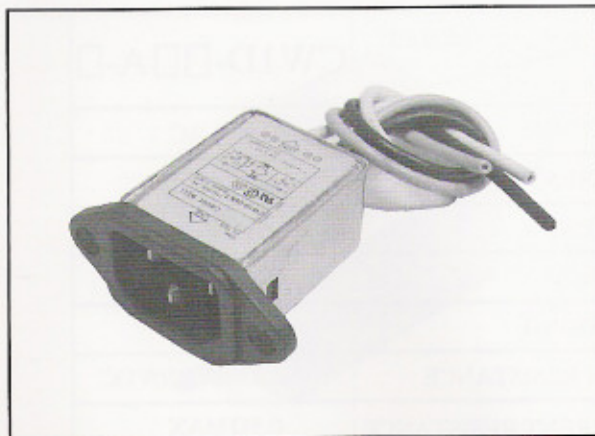
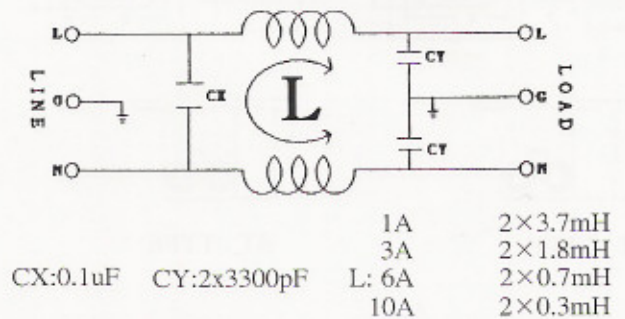


DIMENSION(mm)

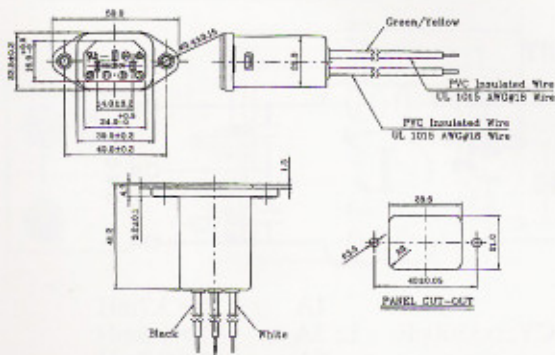


ITEM	MODEL	
RATED VOLTAGE		250V AC
RATED CURRENT		1A.3A.6A.10A
LEAK CURRENT		0.8mA MAX 250V,60HZ
LINE TO LINE		1400V DC
LINE TO GROUND		2200V DC
INSULATION RESISTANCE		100MΩ MIN 250VDC
DIRECT CURRENT RESISTANCE		0.5Ω MAX
OPERATING TEMPERATURE		-25°C~+85°C

CIRCUIT

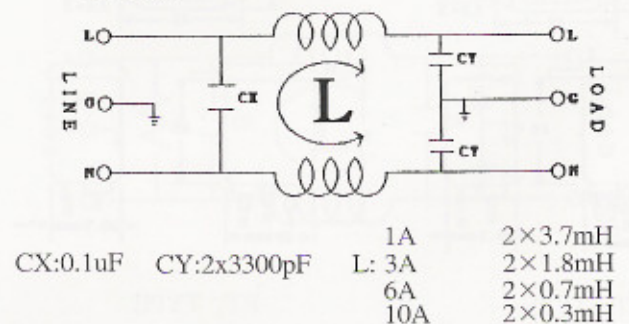


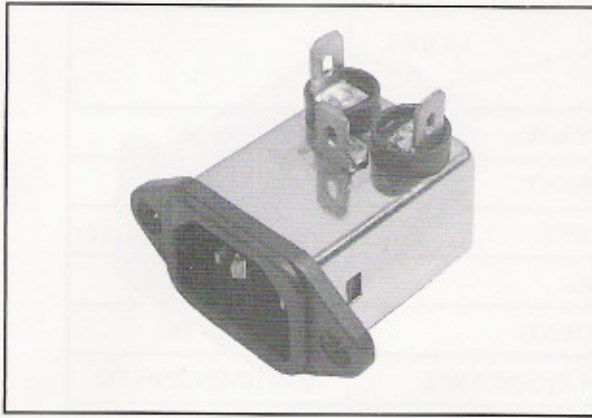
DIMENSION(mm)



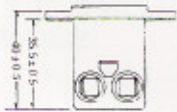
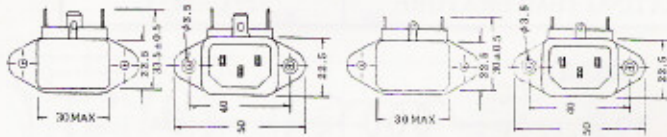
ITEM	MODEL	
RATED VOLTAGE		250V AC
RATED CURRENT		1A.3A.6A.10A
LEAK CURRENT		0.8mA MAX 250V,60HZ
LINE TO LINE		1400V DC
LINE TO GROUND		2200V DC
INSULATION RESISTANCE		100MΩ MIN 250VDC
DIRECT CURRENT RESISTANCE		0.5Ω MAX
OPERATING TEMPERATURE		-25°C~+85°C

CIRCUIT

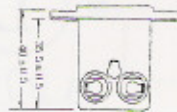




DIMENSION(mm)



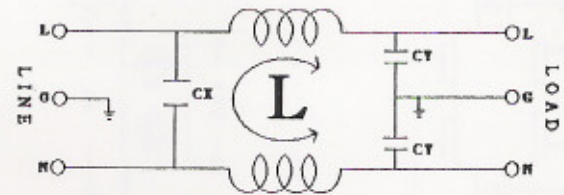
T TYPE



RT TYPE

ITEM	MODEL	DL1A-	A-
RATED VOLTAGE		250V AC	
RATED CURRENT		1A,3A,6A,10A	
LEAK CURRENT		0.8mA MAX 250V,60HZ	
LINE TO LINE		1400V DC	
LINE TO GROUND		2200V DC	
INSULATION RESISTANCE		100MΩ MIN 250VDC	
DIRECT CURRENT RESISTANCE		0.5Ω MAX	
OPERATING TEMPERATURE		-25℃~+85℃	

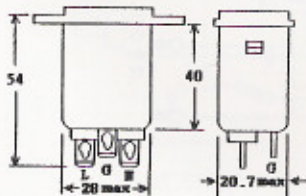
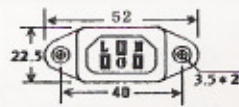
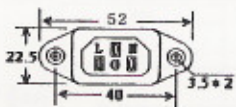
CIRCUIT



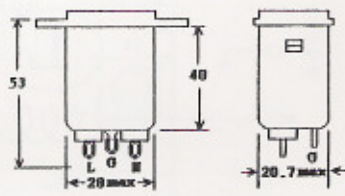
	1A	2×3.7mH
	3A	2×1.8mH
	6A	2×0.7mH
	10A	2×0.3mH
CX:0.1uF	CY:2x3300pF	



DIMENSION(mm)



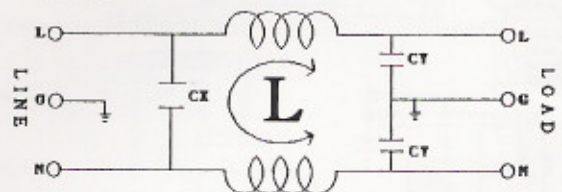
T TYPE



RT TYPE

ITEM	MODEL	DL1D-	A-
RATED VOLTAGE		250V AC	
RATED CURRENT		1A,3A,6A,10A	
LEAK CURRENT		0.8mA MAX 250V,60HZ	
LINE TO LINE		1400V DC	
LINE TO GROUND		2200V DC	
INSULATION RESISTANCE		100MΩ MIN 250VDC	
DIRECT CURRENT RESISTANCE		0.5Ω MAX	
OPERATING TEMPERATURE		-25℃~+85℃	

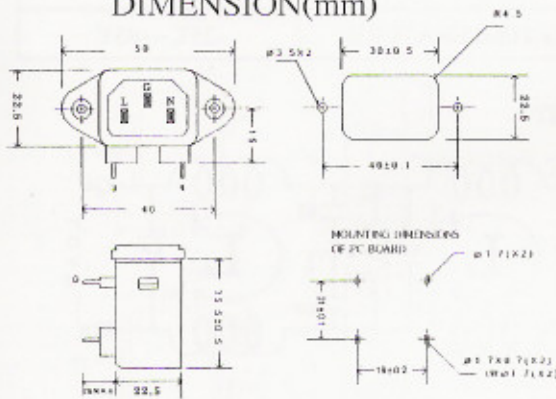
CIRCUIT



	1A	2×3.7mH
	3A	2×1.8mH
	6A	2×0.7mH
	10A	2×0.3mH
CX:0.1uF	CY:2x3300pF	

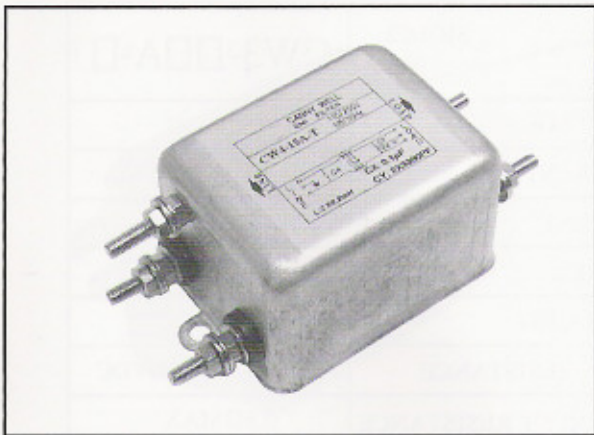
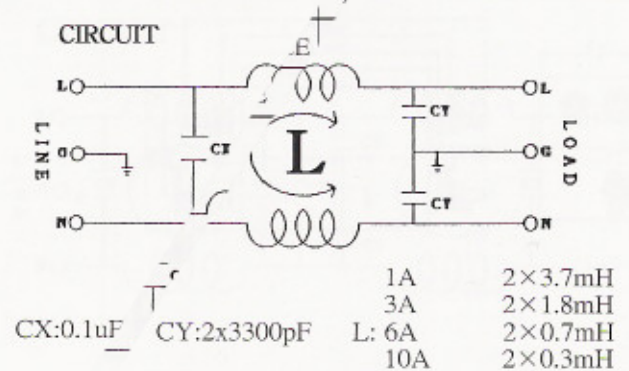


DIMENSION(mm)

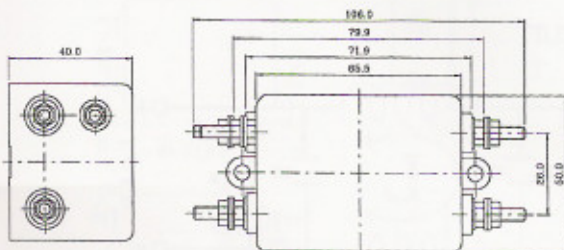


ITEM	MODEL	DL1P-	A-
RATED VOLTAGE		250V AC	—
RATED CURRENT		1A,3A,6A	JA
LEAK CURRENT		0.8mA MAX 250V,60HZ	
LINE TO LINE		14 <sup>VC</sup> V DC	
LINE TO GROUND		6 <sup>VC</sup> 200V DC	
INSULATION RESISTANCE		10 <sup>MA</sup> Ω MIN 250VDC	
DIRECT CURRENT RESISTANCE		0.5Ω MAX	
OPERATING TEMPERATURE		-25°C~+85°C	

CIRCUIT

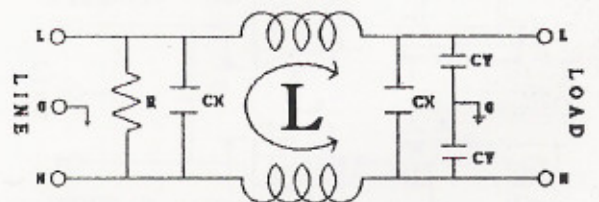


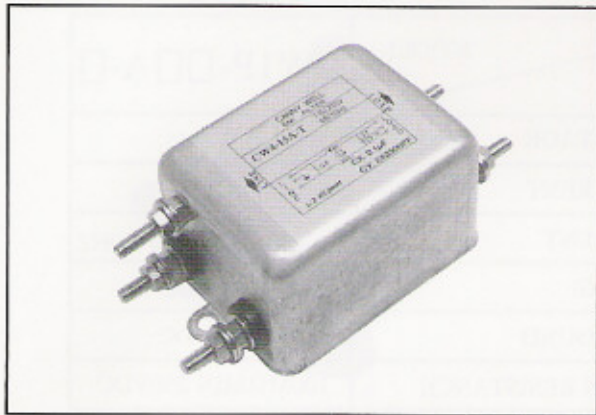
DIMENSION(mm)



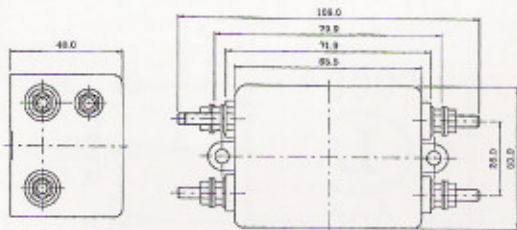
ITEM	MODEL	DL2-	A-
RATED VOLTAGE		250V AC	
RATED CURRENT		6A,10A,15A,20A,30A	
LEAK CURRENT		0.8mA MAX 250V,60HZ	
LINE TO LINE		1400V DC	
LINE TO GROUND		2200V DC	
INSULATION RESISTANCE		100MΩ MIN 250VDC	
DIRECT CURRENT RESISTANCE		0.5Ω MAX	
OPERATING TEMPERATURE		-25°C~+85°C	

CIRCUIT



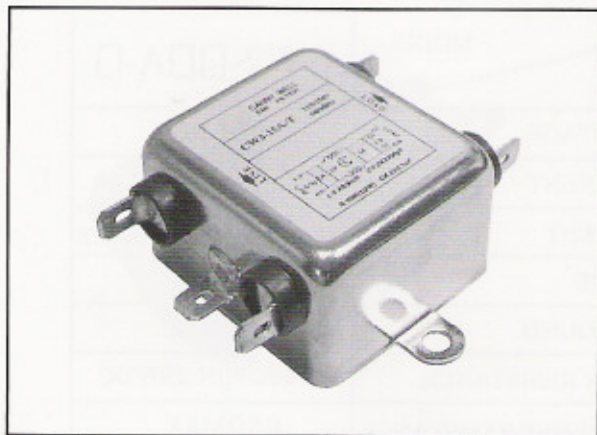
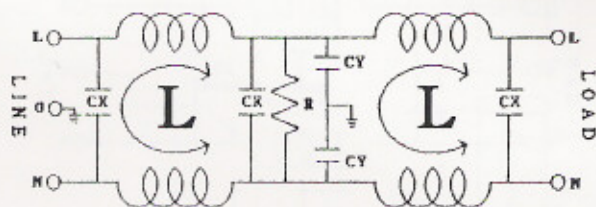


DIMENSION(mm)

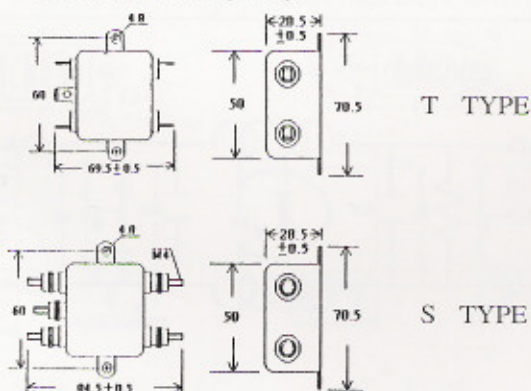


ITEM	MODEL	DL2L2- A-
RATED VOLTAGE		250V AC
RATED CURRENT		1A,3A,6A,10A,15A,20A
LEAK CURRENT		0.8mA MAX 250V,60HZ
LINE TO LINE		1400V DC
LINE TO GROUND		2200V DC
INSULATION RESISTANCE		100MΩ MIN 250VDC
DIRECT CURRENT RESISTANCE		0.7Ω MAX
OPERATING TEMPERATURE		-25℃~+85℃

CIRCUIT

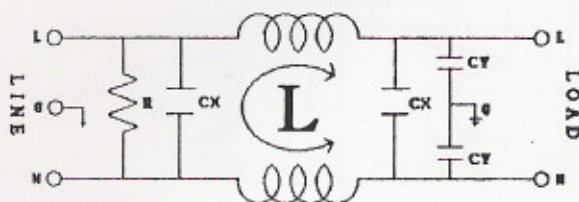


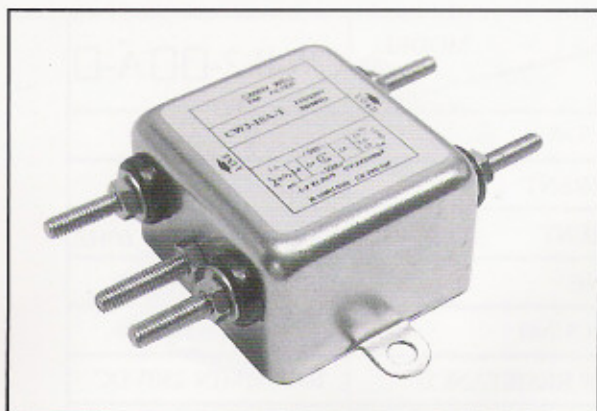
DIMENSION(mm)



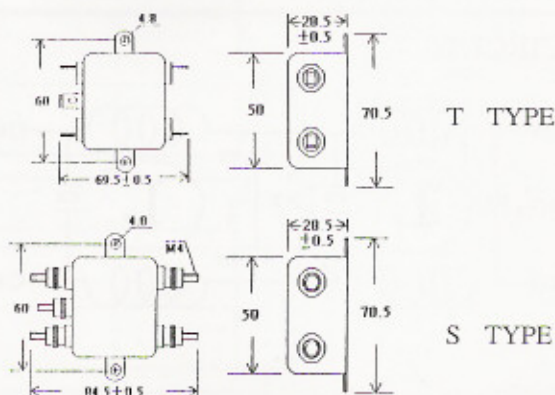
ITEM	MODEL	DL3- A-
RATED VOLTAGE		250V AC
RATED CURRENT		1A,3A,5A,10A,20A
LEAK CURRENT		0.8mA MAX 250V,60HZ
LINE TO LINE		1400V DC
LINE TO GROUND		2200V DC
INSULATION RESISTANCE		100MΩ MIN 250VDC
DIRECT CURRENT RESISTANCE		0.5Ω MAX
OPERATING TEMPERATURE		-25℃~+85℃

CIRCUIT



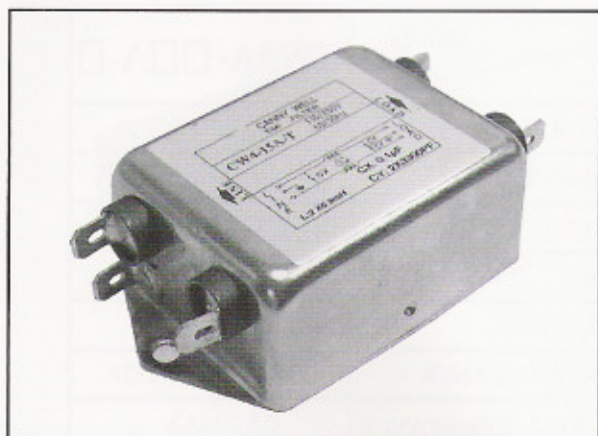
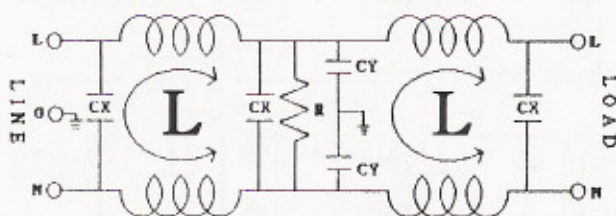


DIMENSION(mm)

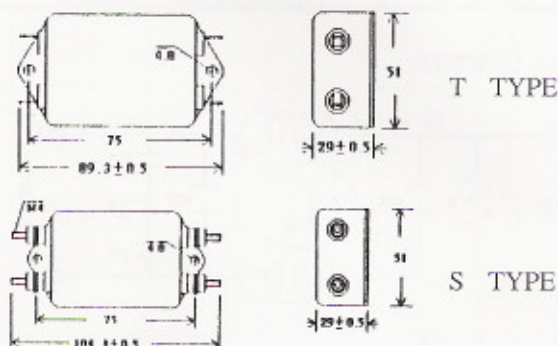


ITEM	MODEL	DL3L2- A-
RATED VOLTAGE		250V AC
RATED CURRENT		1A.3A.6A.10A.15A.20A
LEAK CURRENT		0.8mA MAX 250V,60HZ
LINE TO LINE		1400V DC
LINE TO GROUND		2200V DC
INSULATION RESISTANCE		100MΩ MIN 250VDC
DIRECT CURRENT RESISTANCE		0.7Ω MAX
OPERATING TEMPERATURE		-25°C~+85°C

CIRCUIT

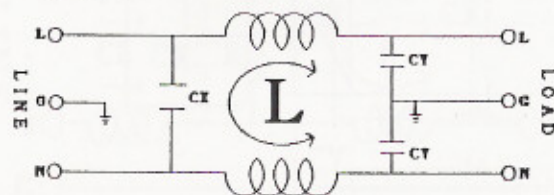


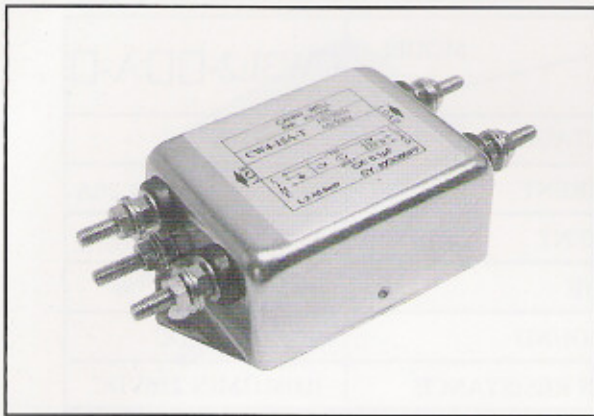
DIMENSION(mm)



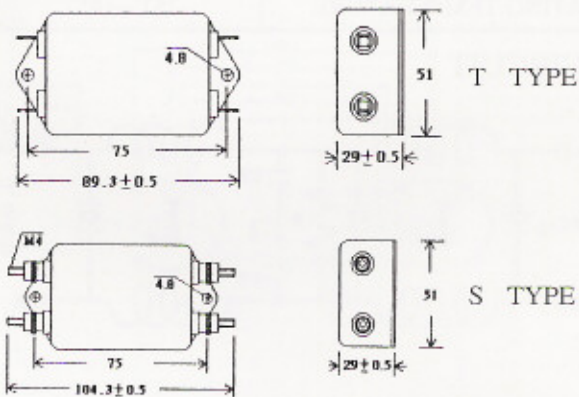
ITEM	MODEL	DL4- A-
RATED VOLTAGE		250V AC
RATED CURRENT		6A.10A.15A.20A
LEAK CURRENT		0.8mA MAX 250V,60HZ
LINE TO LINE		1400V DC
LINE TO GROUND		2200V DC
INSULATION RESISTANCE		100MΩ MIN 250VDC
DIRECT CURRENT RESISTANCE		0.5Ω MAX
OPERATING TEMPERATURE		-25°C~+85°C

CIRCUIT



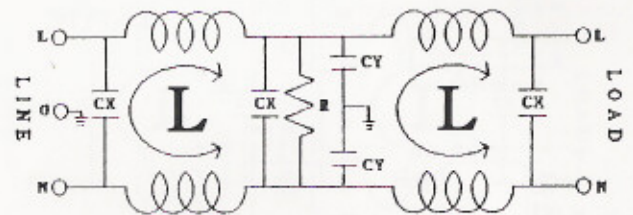


DIMENSION(mm)

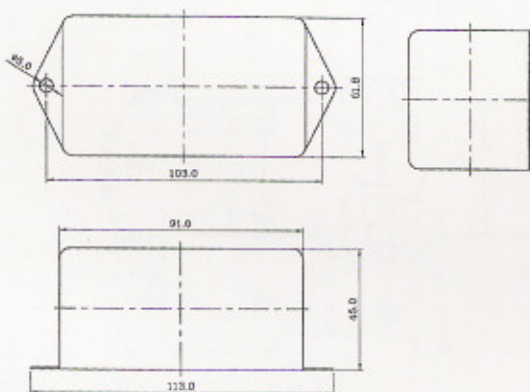


ITEM	MODEL	DL4L2- A-
RATED VOLTAGE		250V AC
RATED CURRENT		6A.10A.15A.20A
LEAK CURRENT		0.8mA MAX 250V,60HZ
LINE TO LINE		1400V DC
LINE TO GROUND		2200V DC
INSULATION RESISTANCE		100MΩMIN 250VDC
DIRECT CURRENT RESISTANCE		0.5ΩMAX
OPERATING TEMPERATURE		-25°C~+85°C

CIRCUIT

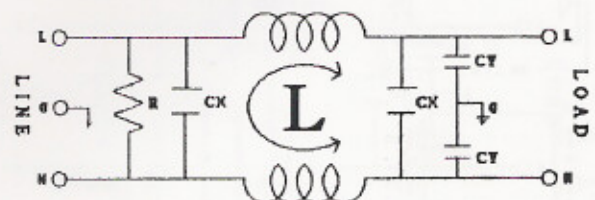


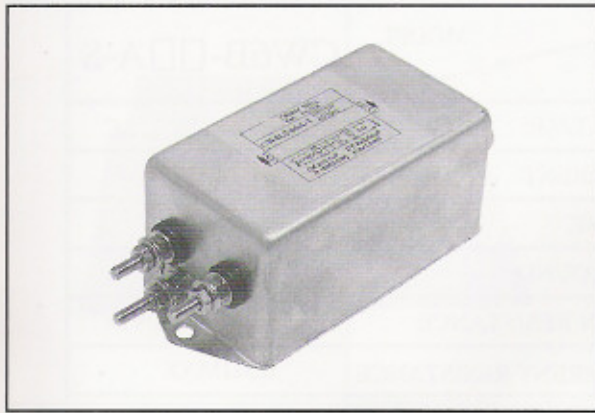
DIMENSION(mm)



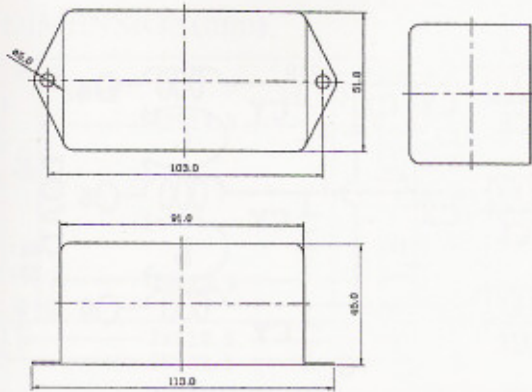
ITEM	MODEL	DL5A- A-
RATED VOLTAGE		250V AC
RATED CURRENT		6A.10A.15A.20A.30A
LEAK CURRENT		0.8mA MAX 250V,60HZ
LINE TO LINE		1400V DC
LINE TO GROUND		2200V DC
INSULATION RESISTANCE		100MΩMIN 250VDC
DIRECT CURRENT RESISTANCE		0.5ΩMAX
OPERATING TEMPERATURE		-25°C~+85°C

CIRCUIT



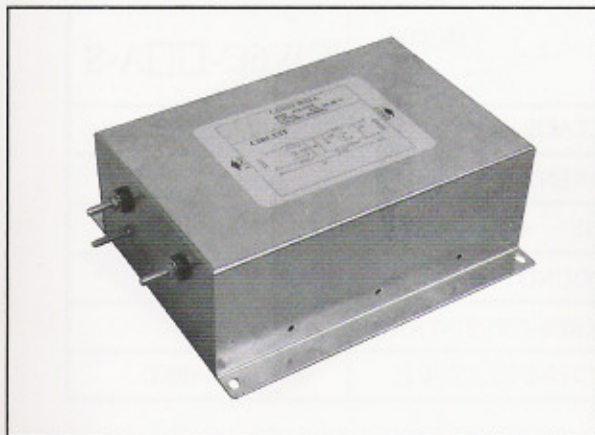
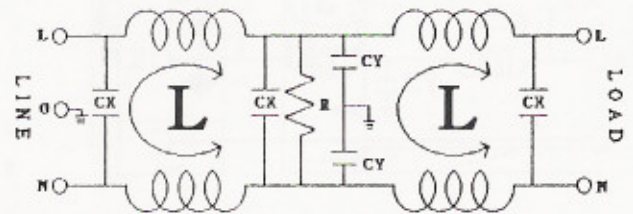


DIMENSION(mm)

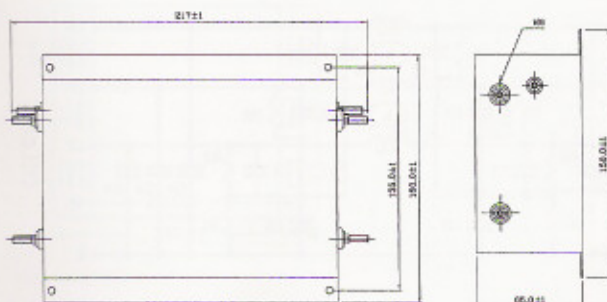


ITEM	MODEL	DL5B-	A-
RATED VOLTAGE		250V AC	
RATED CURRENT		6A.10A.15A.20A	
LEAK CURRENT		0.8mA MAX 250V,60HZ	
LINE TO LINE		1400V DC	
LINE TO GROUND		2200V DC	
INSULATION RESISTANCE		100MΩ MIN 250VDC	
DIRECT CURRENT RESISTANCE		0.5Ω MAX	
OPERATING TEMPERATURE		-25°C ~ +85°C	

CIRCUIT

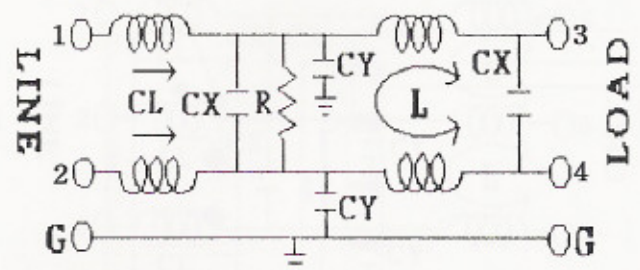


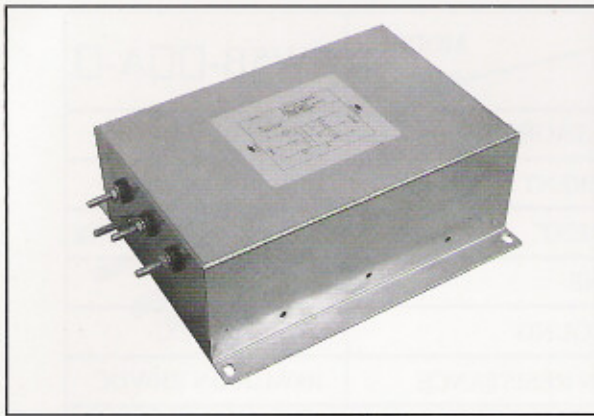
DIMENSION(mm)



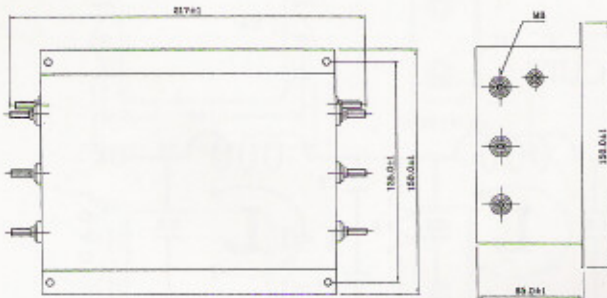
ITEM	MODEL	DL6A-	A-S
RATED VOLTAGE		250V AC	
RATED CURRENT		30A.40A.50A.60A	
LINE TO LINE		1400V DC	
LINE TO GROUND		2200V DC	
INSULATION RESISTANCE		100MΩ MIN 250VDC	
DIRECT CURRENT RESISTANCE		0.5Ω MAX	
OPERATING TEMPERATURE		-25°C ~ +85°C	

CIRCUIT



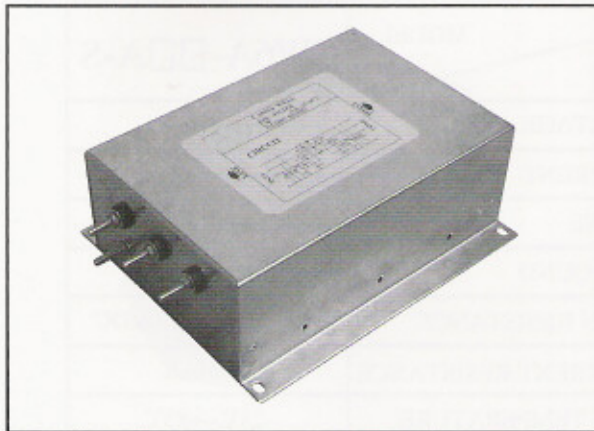
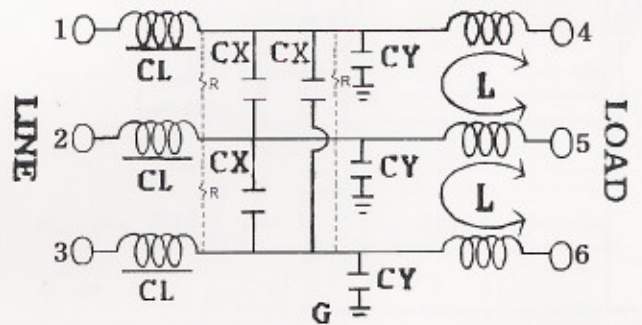


DIMENSION(mm)

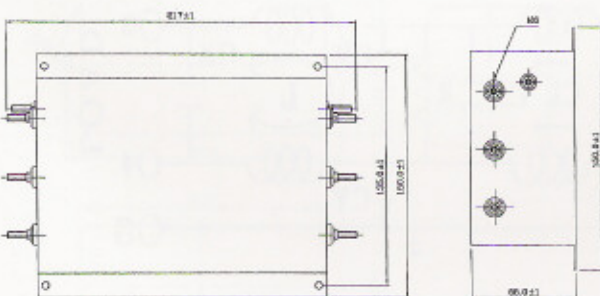


ITEM	MODEL	DL6B-	A-S
RATED VOLTAGE		250V AC	380V AC
RATED CURRENT		10A.20A.30A	
LINE TO LINE		1400V DC	
LINE TO GROUND		2200V DC	
INSULATION RESISTANCE		100MΩ MIN	250VDC
DIRECT CURRENT RESISTANCE		0.5Ω MAX	
OPERATING TEMPERATURE		-25°C	~+85°C

CIRCUIT

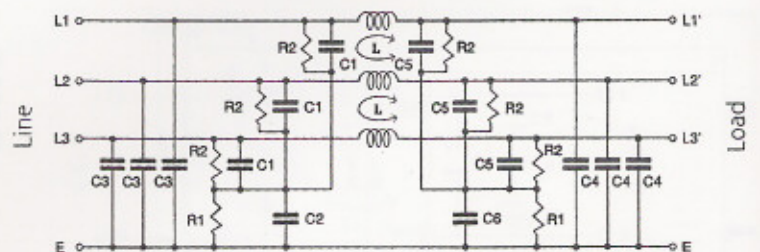


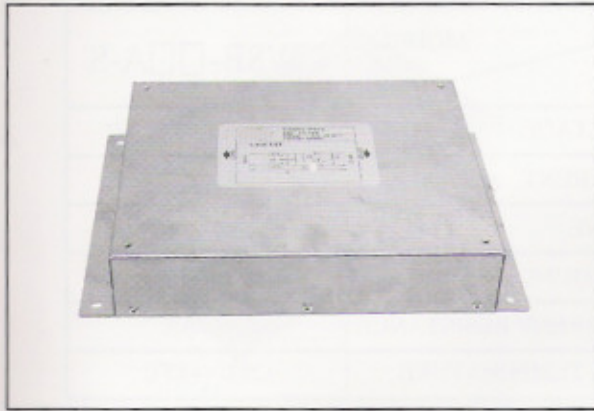
DIMENSION(mm)



ITEM	MODEL	DL6C-	A-S
RATED VOLTAGE		250V AC	380V AC
RATED CURRENT		10A.20A.30A	
LINE TO LINE		1400V DC	
LINE TO GROUND		2200V DC	
DIRECT CURRENT RESISTANCE		0.5Ω MAX	
OPERATING TEMPERATURE		-25°C	~+85°C

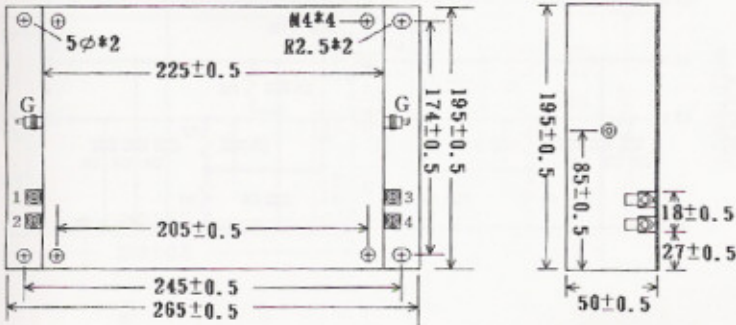
CIRCUIT



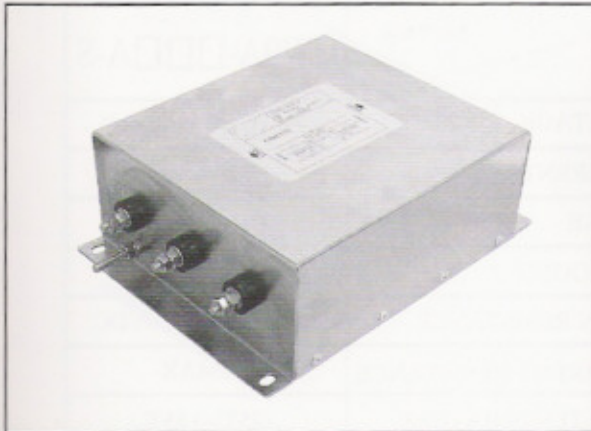
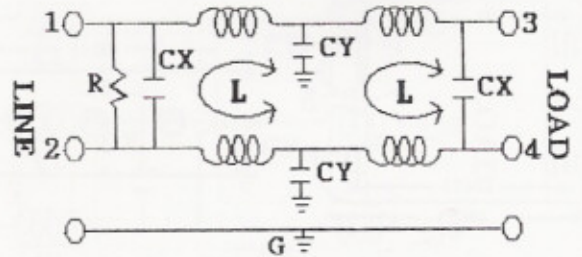


ITEM	MODEL	DL7A-	A-D
RATED VOLTAGE		250V AC	
RATED CURRENT		20A.30A.40A.50A	
LINE TO LINE		1400V DC	
LINE TO GROUND		2200V DC	
INSULATION RESISTANCE		100MΩMIN 250VDC	
DIRECT CURRENT RESISTANCE		0.1ΩMAX	
OPERATING TEMPERATURE		-25°C~+85°C	

DIMENSION(mm)

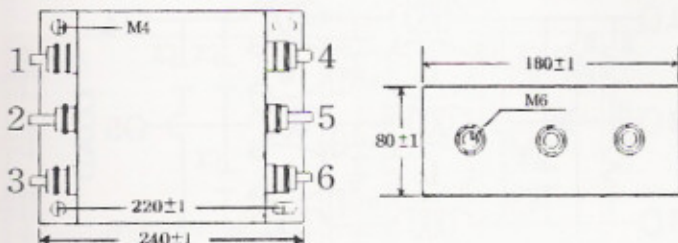


CIRCUIT



ITEM	MODEL	DL8A-	A-S
RATED VOLTAGE		250V AC 380V AC	
RATED CURRENT		40A.50A.60A	
LINE TO LINE		1400V DC	
LINE TO GROUND		2200V DC	
INSULATION RESISTANCE		100MΩMIN 250VDC	
DIRECT CURRENT RESISTANCE		0.5ΩMAX	
OPERATING TEMPERATURE		-25°C~+85°C	

DIMENSION(mm)



CIRCUIT

